

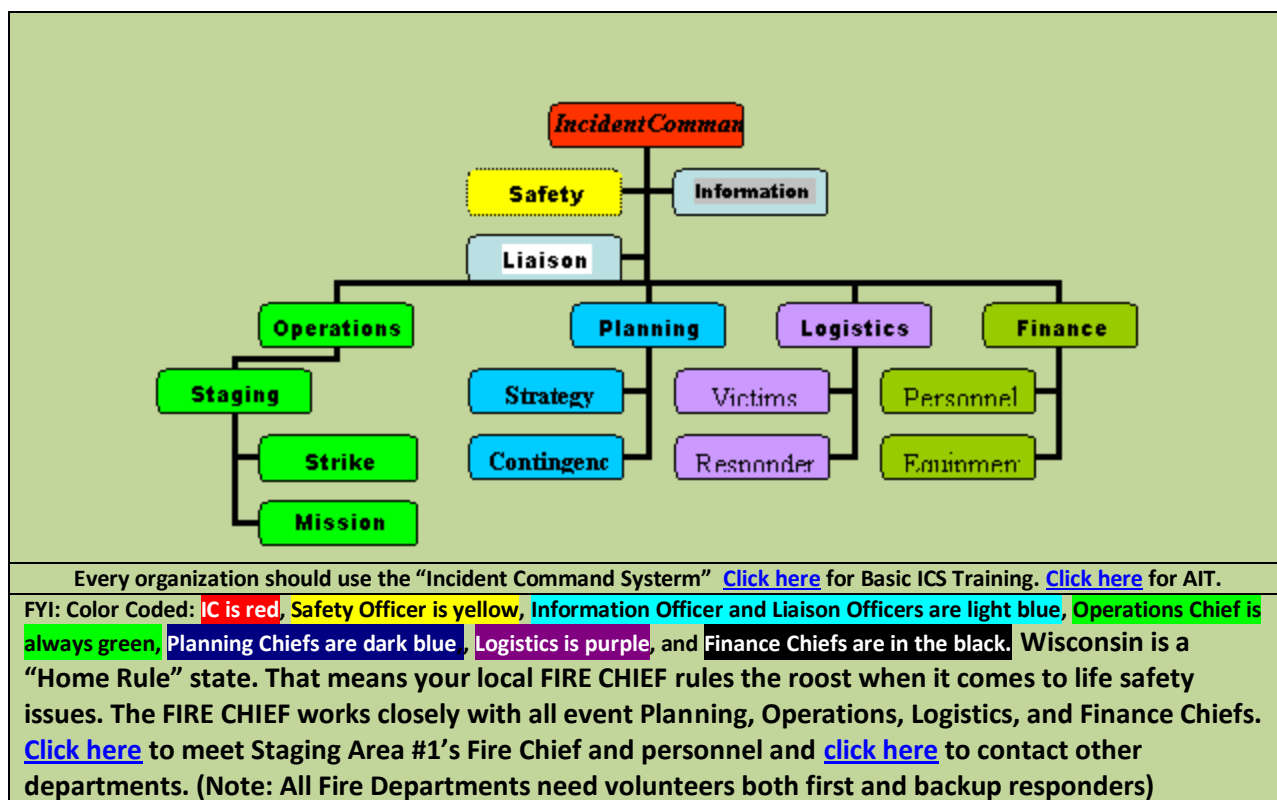
May 14, 2010

Following is a history log of Operations Chief briefings. On May 24, 2010, I'll park this in our Risk Management Learning Center library at www.RMLearningCenter.com Credit Union Risk Managers should go through their credit union, league, and Cuna Mutual directors of education for mission summaries and "best practices."

Rich Woldt - CEO The Risk Management Learning Center.

Briefing: The Role of the Logistics Chief!

Note: All Briefings begin with a review of Incident Command System. Our goal is to get everyone to speak the same incident management language. When you're the first to the scene, the first thing out of your mouth should be; "I TAKE CONTROL" Your immediate goal is to identify the type, scope, and potential for incident scope creep. Based on your findings you may or may not move from a "single" to a "Unified" command. *Rich Woldt*



Webster defines "Logistics" as, "The branch of military science concerned with troop movements and supplies."

- **Our Logistics Chief is responsible for defining our “Theater of Operation (TOP)” as well as adjusting our perimeter if or when the scope of our operation changes. For both “Boots on the Ground” and “Rubber hits the Road” our primary Theater of Operation is Door County, however, based on the scope of Rolling Thunders 1244 Memorial Ride Logistics required staging areas to include lodging and meals had to be set up both in La Crosse as well as Green Bay.**
- **Logistics Chiefs also determine the appropriate location for Staging Areas, Emergency Operations Centers (EOC), and Outposts to include how volunteers and bikers would be lodged and fed while outside of Door County.**
- **Logistics Chiefs are also responsible for locating, locking down, and linking victims during a natural or manmade disaster, terrorist attack, pandemic, or large scale community crisis. During both Boots on the Ground and Rubber hits the Road, our Logistics Chief was responsible for locating the grave sites for our 5 Door County Veterans Killed in Action during the Vietnam War as well as attempting to find Vietnam Veterans living in Door County or residing somewhere in Wisconsin.**

Logistics Chief - 5 Staging Areas: Google Mapping

We’ve identified 5 Staging Areas and are preparing traffic flow and vehicle positioning plans based on the number of riders and drivers answering roll-call. We’re also writing Staging Area Management protocols to include using GPS and Google Mapping technologies for security and safety. We’re developing plans to track both rides from VA Hospitals, retirement centers, and homes of shut-ins via Google earth links.

Staging Area	Website	GPS - Google Map
Washington Island High School and Cemetery at School House Beach.	Door County Schools	Washington island high school Google Search Google Map

Viking Grill – Ellison Bay	www.sbfd.com	Area Fire Departments	Viking Google Map
Pioneer Credit Union Branch parking lot – 1449 Green Bay Road, Sturgeon Bay 54235	www.PioneerCU.org		Pioneer CU Google Map
Pioneer Credit Union parking lot 828 Morris Ave. Green Bay	www.PioneerCU.org		Street View – Google Map
Super 8 – 1625 Rose Street La Crosse	Super 8 La Crosse		Google Map

(Washington Island High School, Danny’s Viking Grill in Ellison Bay, the Pioneer Credit Union parking lot at..... on the West side of Sturgeon Bay and at 825 Morris Ave. two blocks south of Lambeau Field, and the Super 8 motel in La Crosse.

Operations Chief – Staging Area Manager:

Operation “Rubber hits the Road” is similar to a parade or an auto race. We need to line up bikes, cars, trucks, emergency vehicles, etc. like a parade with bikers first. We need to safely pick up riders from two to four staging areas (Viking Grill – Ellison Bay and Pioneer CU 1449 Green Bay Road, and possibly from the Egg Harbor and Saint Peter & Paul’s cemetery in Institute). For now, we’ll adopt the following principles:

- Entry into staging areas will be through the north entrance and exit out the south exit.
- The lead biker will proceed to and park near the south exit facing out of the lot. Cars, trucks, busses, etc. will park toward the back of the lot to allow bikers waiting in the lot to form behind those already in the ride.

Killed in Action Gravesites:

Locating Gravesites:

Learn to use the cemetery index created by the Peninsula Genealogical Society. There is a printed version of this index in the Laurie History Room of the Sturgeon Bay library

<http://www.rootsweb.ancestry.com/~wipgs/PGS/cemeteriesindexes.htm>

If you wish to search on a specific name, you can use their search box on the homepage

<http://www.rootsweb.ancestry.com/~wipgs/PGS/index.htm>

Short-timer's calendar: *In Vietnam most vets carried a short-timers calendar to count down the days they had left in-country. Mine was printed around my helmet, others wrote them on their arm or carried it in their back-packs.*

The Short-times calendar for "Boots-on-the-Ground" and "Rubber-hits-the-Road" started 72 days out from Opening ceremonies for LZ Lambeau. I picked 72 days to remind our CU Risk Managers of their 72 hour stand-alone duty during the next terrorist attack, natural disaster or pandemic.

Staging Areas & EOCs

Staging Areas	Website	GPS - Google Map
#1 Washington Island High School and Washington Island Cemetery at School House Beach	Door County Schools Google Map	Washington island high school Google Search
#2 Viking Grill – 12029 Hwy 42 Ellison Bay, Wisconsin	www.sbfd.com Area Fire Departments	Viking Google Map
#3 Pioneer Credit Union Branch parking lot – 1449 Green Bay Road, Sturgeon Bay 54235	www.Pioneercu.org	Pioneer CU Google Map
#4 Pioneer Credit Union 828 Morris Ave. Green Bay	www.Pioneercu.org	Street View – Google Map
#5 Super 8 – 1625 Rose St. La Crosse	Super 8 La Crosse	Google Map

Staging Areas – KIA Gravesites

Name Rank/Site/Panel

Home Page

GPS - Google
Map

#1 [Google Map](#)



Dan L. Pfister

Sfc. U. S. Army - Medic

Sturgeon Bay,

KIA June 18, 1968

[Panel 56W line 26](#)

RIP Bayside Cemetery



Black car parked next to gravesite!



#1 [Google Map](#) to gravesite.

Go as close in as you can and then drag the little man to the site. Once there you should get a ground view you can use to pan 360 degrees.

Note: Click on Panel 56W line 26 to visit the WALL in Washington D.C.

There you'll be able to read messages left by others and leave a personal message of your own. [Click here](#) for a recommend Wall search site!

#2 [Google Map](#)

www.sbfd.com

[Viking Google
Map](#)



[Area Fire Departments](#)

Randy W. Wagner

Corporal U.S. Army

Egg Harbor,

KIA 11/27/1968

[Panel 38W line 80](#)

RIP Egg Harbor Cemetery

#3 [Google Map](#)



David R. Schaefer

Sergeant U.S. Army

Sturgeon Bay

KIA May 1, 1969

[Panel 26W line 94](#)

RIP St P&P Institute

#4 [Google Map](#)



Richard E. Perez

Lance Corporal USMC

Washington Island

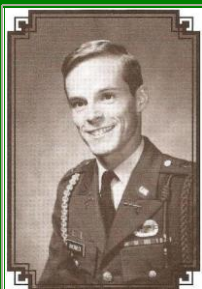
KIA September 6, 1969

[Panel 18W line 49](#)

RIP Island Cemetery

#5 [Google Map](#)

[Google Map](#)



Philip M. Overbeck

1st Lieutenant US Army

Sturgeon Bay

KIA June 10, 1970

[Panel 09W line 40](#)

RIP Bayside Cemetery